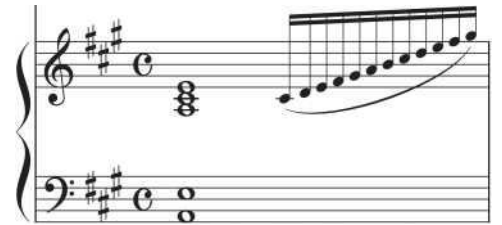
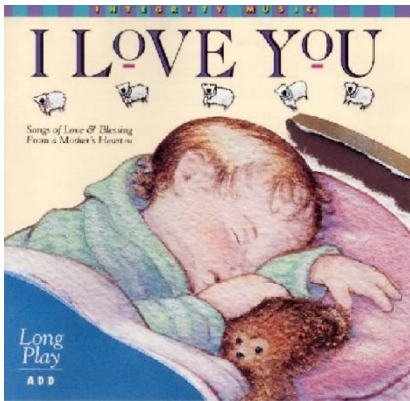


神様の手作り

Handmade By God

Nancy Gordon 1992 Integrity's Hosanna! Music



2

こ の せ か い の ー た か ら と し て

6

しゅ は あ な た を つ く ら れ た

10

と く べ つ に ー デ ザ イン さ れ

と ど け ら れ た - わ た し の こ

This system contains the first four measures of the song. The vocal line starts with a treble clef and a key signature of three sharps (F#, C#, G#). The lyrics are 'と ど け ら れ た - わ た し の こ'. The piano accompaniment consists of two staves: a right-hand staff with a treble clef and a left-hand staff with a bass clef. The right-hand staff has a 7/8 time signature. The piano part features a steady eighth-note accompaniment in the right hand and a simple bass line in the left hand.

あ > か み さ ま の て づ く

This system contains measures 5 through 8. The vocal line continues with the lyrics 'あ > か み さ ま の て づ く'. The piano accompaniment continues with the same rhythmic pattern. The right-hand staff shows some chordal textures, and the left-hand staff maintains a consistent bass line.

22

り そ の い き - を ふ き こ ま れ

This system contains measures 9 through 12. The vocal line has the lyrics 'り そ の い き - を ふ き こ ま れ'. The piano accompaniment continues. The right-hand staff shows a more active melodic line, and the left-hand staff has a steady bass line.

26

て あ > ユ ニ - ク な あ な た

This system contains measures 13 through 16. The vocal line has the lyrics 'て あ > ユ ニ - ク な あ な た'. The piano accompaniment continues. The right-hand staff shows a more active melodic line, and the left-hand staff has a steady bass line.

30

は ぎつ と か み さ ま を た た える で

34

しょう

38

42

あ > あ な た の じ ん せ い

46 *rit.*

で きつ と か み さ ま を た た え る で

50 *rit.*

しょう か み さ ま を た た え

54

る で しょう

59